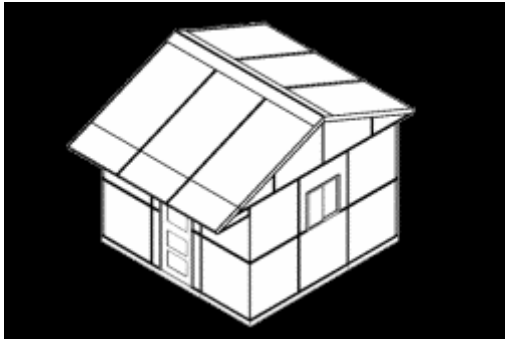


DAEDALUS SYSTEMS

INCORPORATED

Disaster Response Shelter

*Temporary, Transportable, Convertible Structures
Produced from recycled materials to achieve great
structural integrity and longevity*



IMMEDIATELY AVAILABLE FOR:

Temporary Housing

Community/Religious Center

Health Maintenance Facilities

Food Service/ Preparation Facilities

Sanitary Facilities

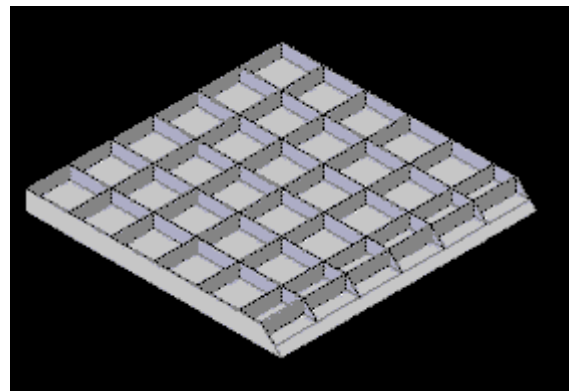
Chemically resistant
Dimensionally stable
Durable
Environmentally friendly
Hazard free
Insect Resistant

Hygienic
Lightweight
Low cost
Long lasting
Low flammability

Non toxic
Rapid/easy assembly
Structurally sound
Thermally resistant
Water resistant
Weather resistant

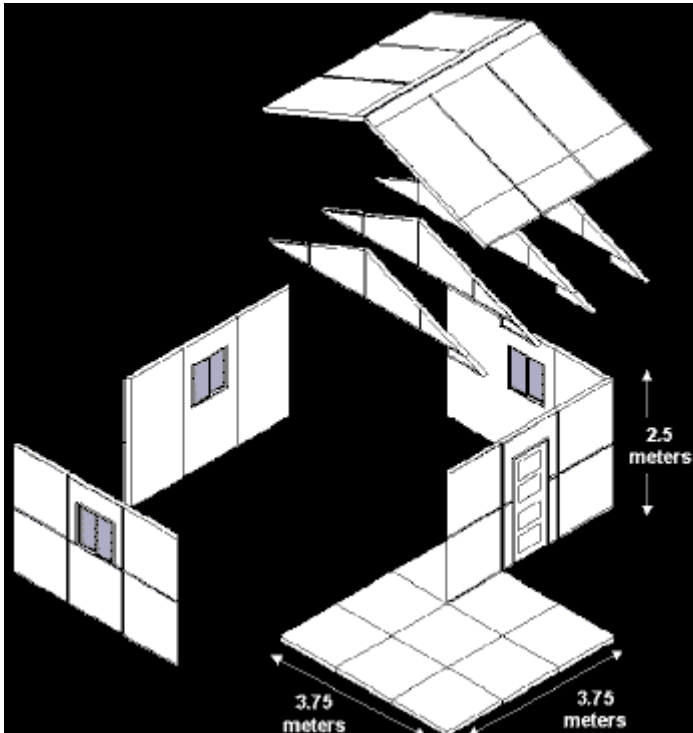
Daedalus structures are manufactured using advanced composite technology. The panels permit fabrication of a single structural unit of approximately 14 square meters within hours by a team of two to three people using basic hand tools.

Each structure is comprised of polymer composite panels measuring 1.25 meters by 1.25 meters, weighing approximately 12 kilograms.



Mitred Wall Panel
(1.25 meters by 1.25 meters)

Each basic structural unit consists of approximately 50 panels. The panels are assembled three panels in width to form a structure 2.5 meters high by 3.75 meters on each side. The area of the basic structural unit is approximately 14 square meters or 150 square feet. Floor panels are also included to provide a clean, safe, and easily maintained environment.



Basic Structural Unit
(Single Unit - 14 m²)

In addition to the basic structural unit, Daedalus designed a single unit of approximately 19 square meters that is very suitable for family shelter for disaster response.

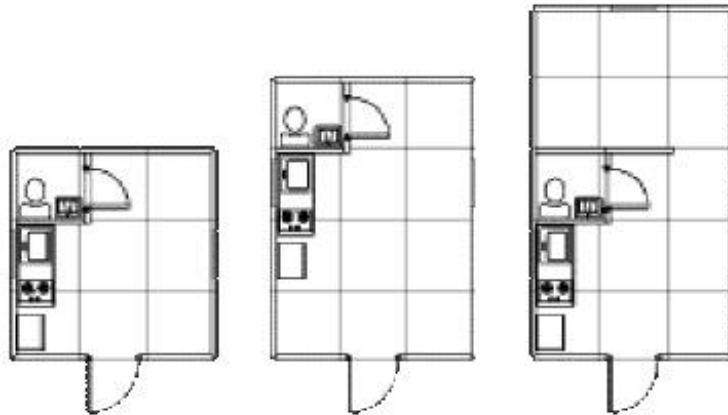


18.75 m² structure

Structures can be assembled in variety of configurations as illustrated in the table below:

Structural Units	Measurement square meters	Measurement square feet	Area square meters	Area square feet
Single	3.75 x 3.75	12.38 x 12.38	14.	150
Expanded single	3.75 x 5.0	12.38 x 16.4	18.75	203
Dual	3.75 x 7.50	24.75 x 12.38	28	306
Triple	3.75 x 11.25	37.12 x 12.38	42	460

Each of the designs can be disassembled, easily transported, and converted to permanent housing as illustrated in the following designs
Click here for alternate designs



<<Top of Page >>

**DAEDALUS SYSTEMS
INCORPORATED**

8653 Richmond Highway, Alexandria, Virginia 22309
(703) 360-5700 · (703) 360-1974 fax
Info@daedalusproject.com · www.daedalusproject.com